



GAT MONTHLY MEMBERSHIP PROGRESS REPORT

Results as of: 4/30/2024

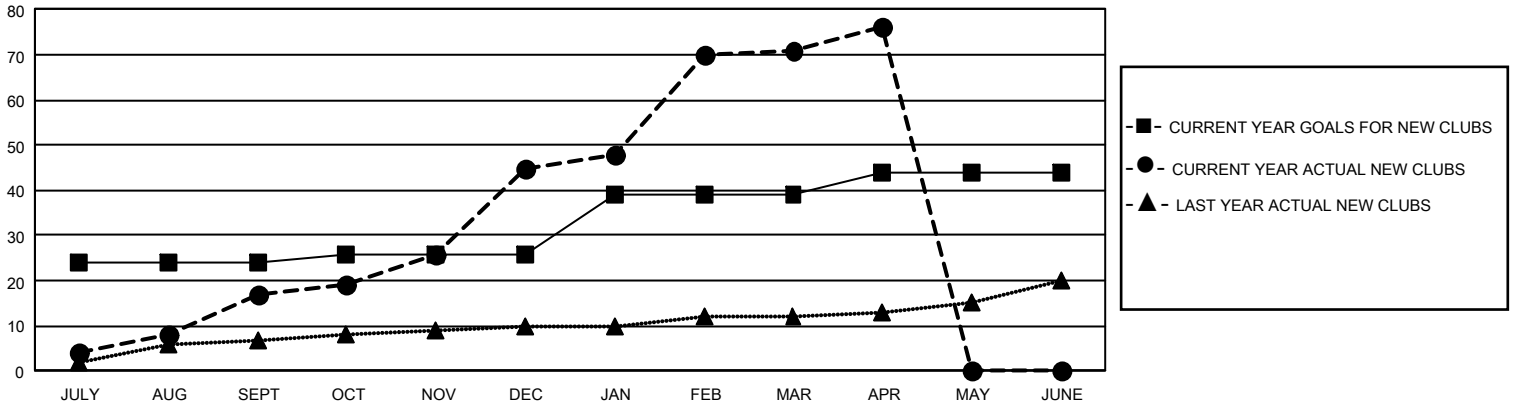
GMT Constitutional Area 6 - I, Group H

REPORT DOES NOT INCLUDE CLUBS IN UNDISTRICTED AREAS.

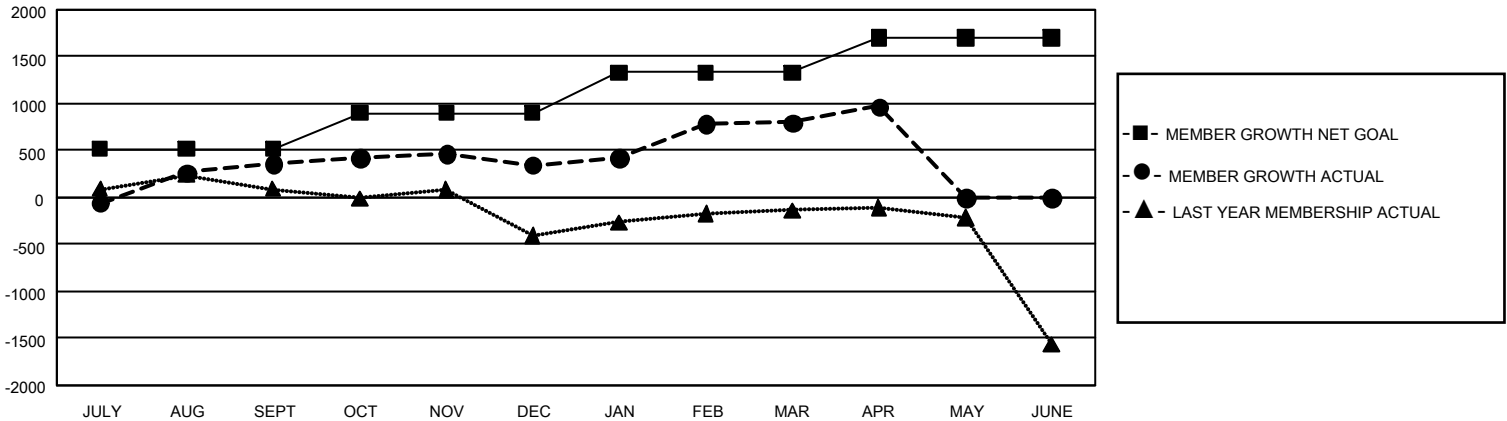
Clubs			
RESULTS FOR 2023-2024			
QUARTER	NEW CLUB GOAL	NEW CLUBS	DROPPED CLUBS
JULY/AUG/SEPT	72	17	21
OCT/NOV/DEC	6	28	45
JAN/FEB/MAR	39	26	8
APR/MAY/JUNE	15	5	1

Members			
RESULTS FOR 2023-2024			
QUARTER	MEMBER GROWTH NET GOAL	MEMBER GROWTH ACTUAL	DROPPED MEMBERS ACTUAL (including transfers)
JULY/AUG/SEPT	516	1,714	1,138
OCT/NOV/DEC	385	2,178	2,047
JAN/FEB/MAR	430	946	443
APR/MAY/JUNE	370	248	70

GOALS AND ACTUAL NEW CLUBS CUMULATIVE



GOALS AND ACTUAL MEMBERS CUMULATIVE



DROPPED CLUBS: 75	491 CLUBS OF 862 ADDED 1 OR MORE NEW MEMBERS	GENDER DISTRIBUTION	
		MALE 17,943 (62.19%) FEMALE 10,908 (37.80%) NON BINARY 0 (0.00%) PREFER NOT TO ANSWER 3 (0.01%)	
DROPPED MEMBERS		CLICK HERE FOR CUMULATIVE MEMBERSHIP DATA	
DECEASED 74 CLUB CANCELLED 1,289 OTHER 2,328 TOTAL 3,691		TOTAL FAMILY UNIT MEMBERS 17,754 FAMILY MEMBERS PAYING HALF DUES 11,339	